



# What's the recipe for scaling new solutions in cities?

Erica Eneqvist, City of Stockholm

”Stockholm should be a world leader in reducing the emissions, and a role model for others.”



A just transition

Climate positive

-50% consumption based emissions

2030

Emission free inner city traffic

Fossil free organisation

-80% reduction from transports (2010)

-30% reduction of car traffic (2017)

# Large reductions of emissions since 1990

**3 400 000  
tons CO<sub>2</sub>e**

**1 150 000  
tons CO<sub>2</sub>e**

# Ongoing examples from Stockholm



Zero emission  
zone



Fossil free  
construction site



Reducing  
plastics



Drones



Active  
mobility



Dr. Oetker



# BAKING POWDER

*also perfect for  
gluten free baking*



# Too much focus on the actual experiment



- 1) Organize the before and after-work!
- 2) Remember the public values! Municipalities are public actors!

**WE TALK ABOUT SCALING, BUT MEAN DIFFERENT THINGS**



# Experiments are difficult in the public sector

Public sector logic

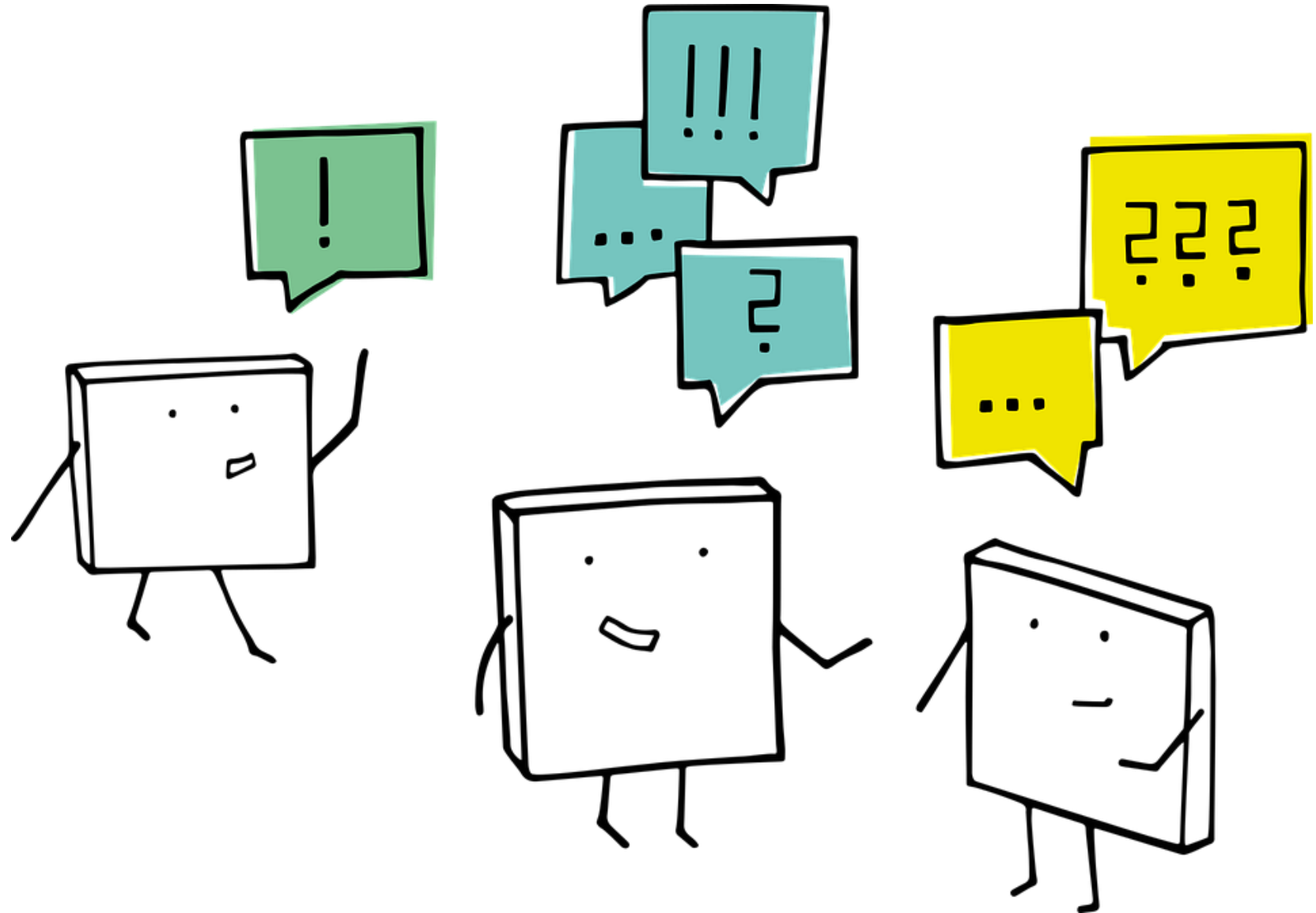
Experimental logic



(Illustration: Helmut Kruse)

Public sector logic	Experimental logic
Hierarchy	Bottom-up
Laws, rules, regulations	Open up, facilitate, collaborate
Control and stability	Creativity, test and change
Balance between interests	Co-produce with other actors

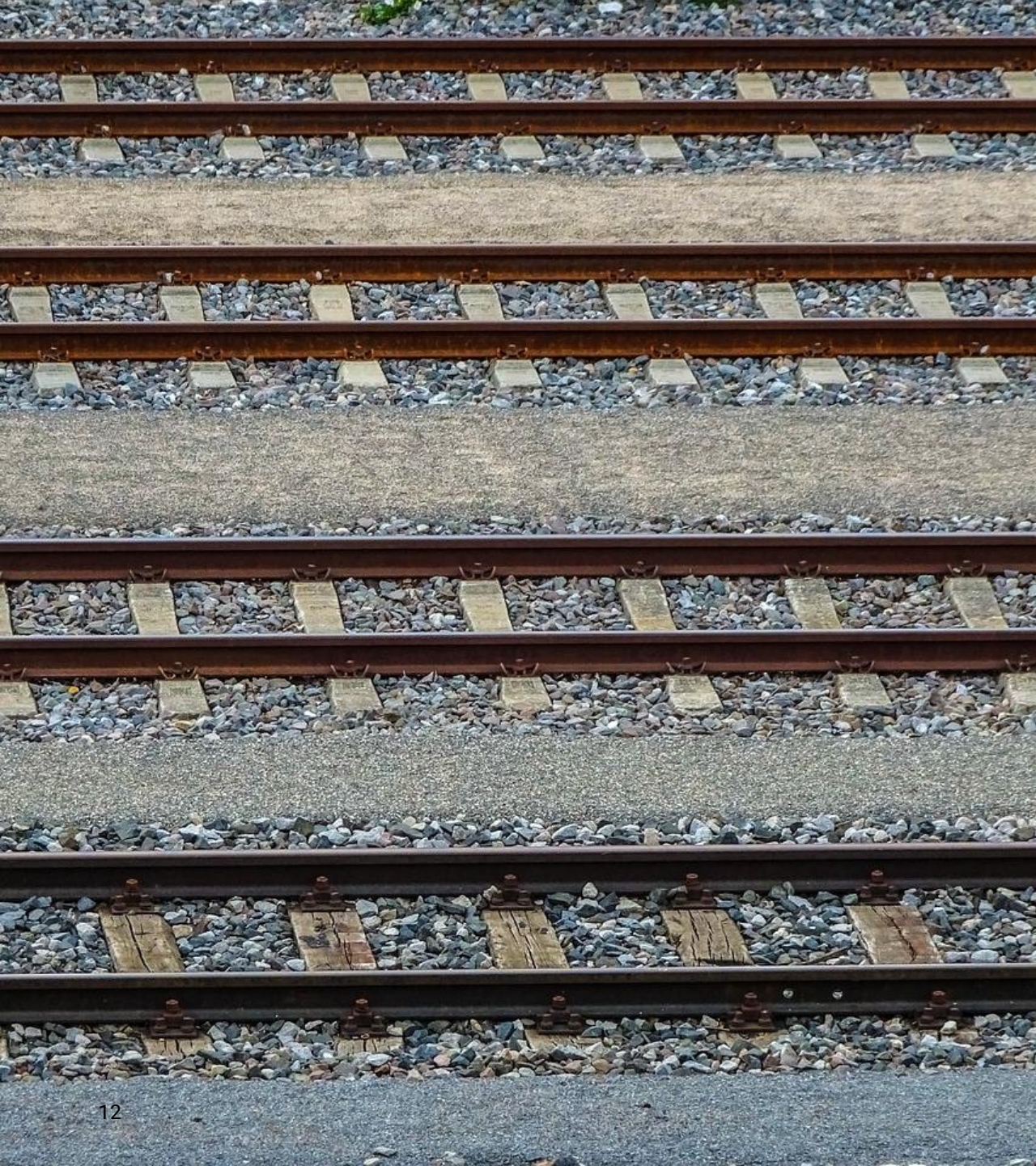
# EXAMPLES OF DIFFICULTIES (AND WHAT TO AVOID)



**MUNICIPALITIES ARE NOT ONE ORGANISATION**



**Stockholms  
stad**



## **PROJECTS ARE ON THEIR OWN TRACKS**

– create connections!

# INVOLVE THE RIGHT ACTORS



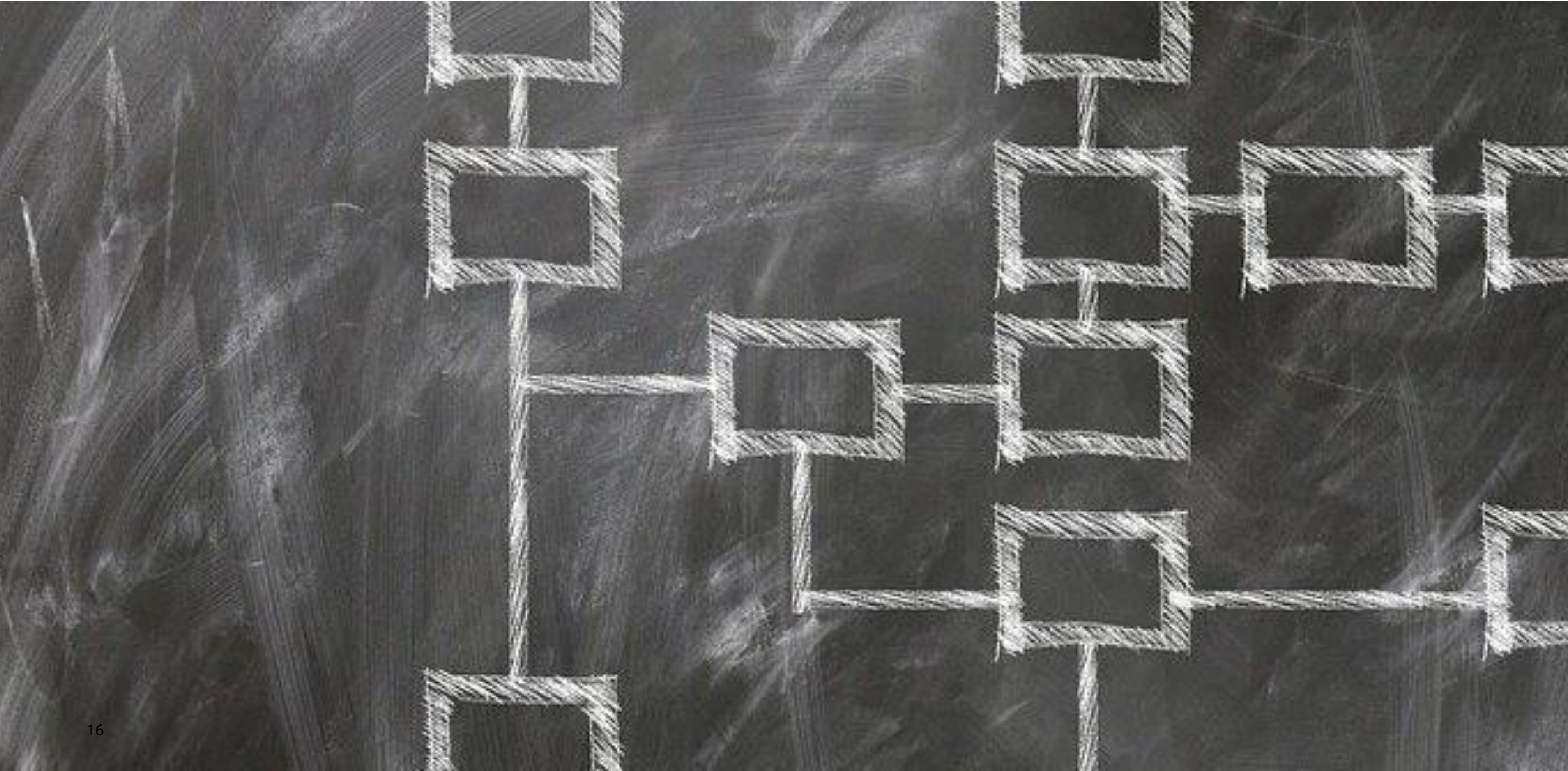
# UNDERSTAND YOUR GOALS





**INVOLVE FINANCE, LEGAL &  
OTHER ACTORS WITH POWER**

# INVOLVE THE MANAGEMENT



**BEST PRACTICE IS NOT ENOUGH! TOP DOWN VS BOTTOM UP**



# FUNDING IS NOT A REAL BUSINESS MODEL



# YOUR TIME IS VALUABLE



# REMEMBER THE POLITICS



# Thank you!

[Erica.eneqvist@stockholm.se](mailto:Erica.eneqvist@stockholm.se)

